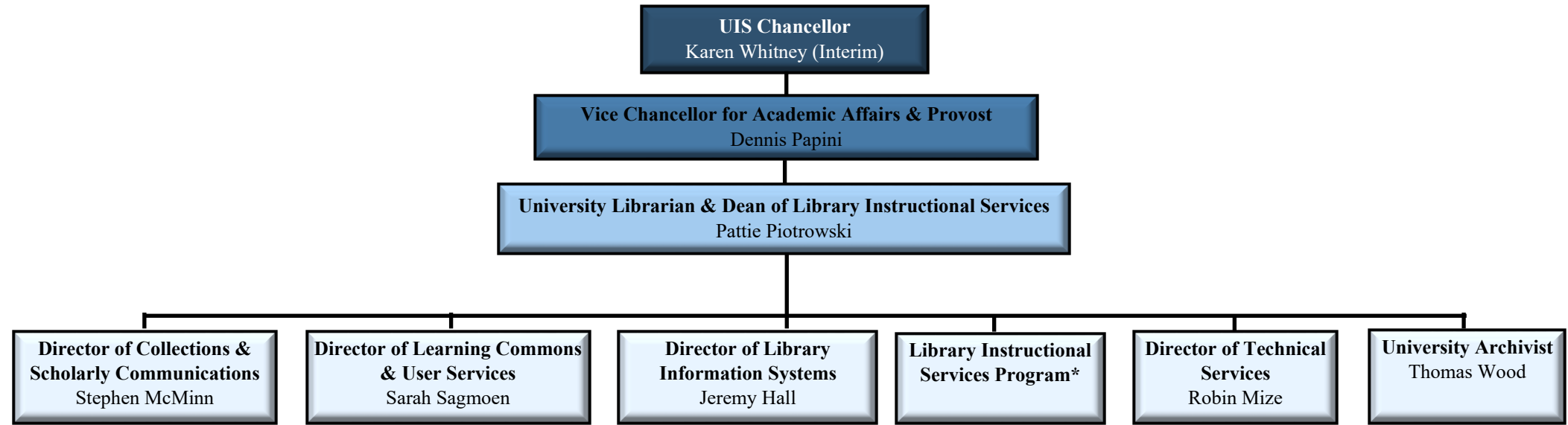
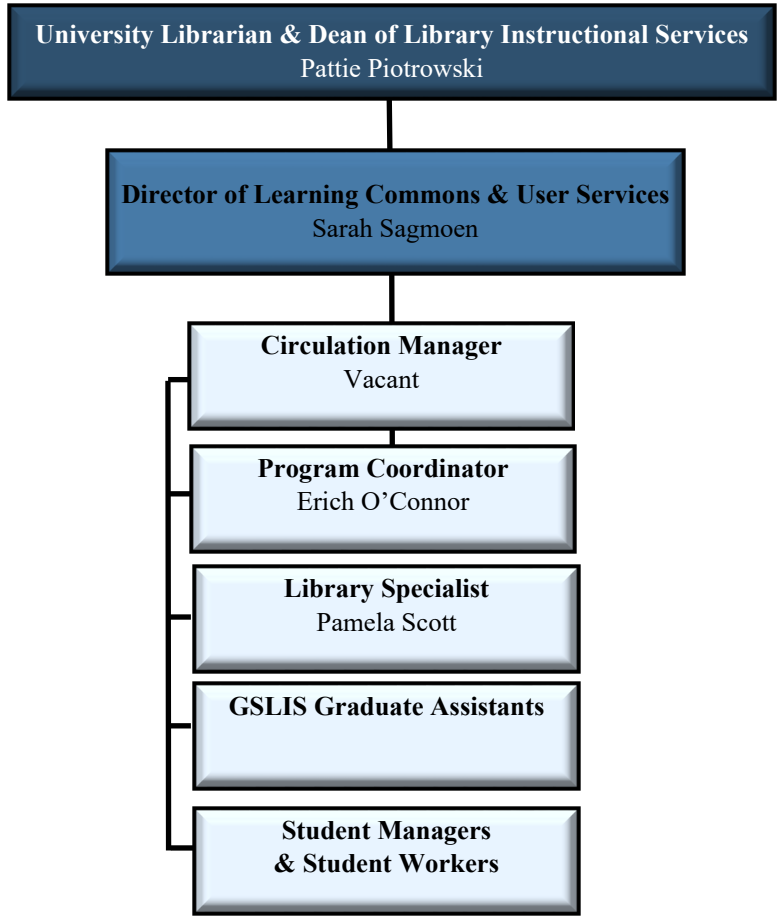


\*Coordinates collection development activities of ISLs

\*\*Coordinates reference activities of ISLs. Chair of Library Instructional Services Program.

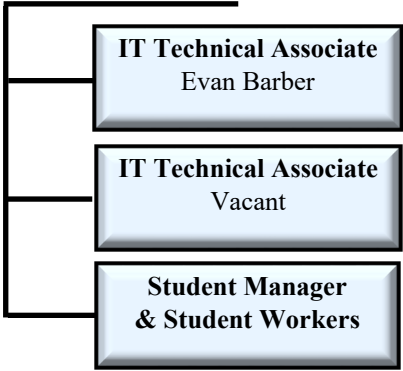


\*John Laubersheimer, Chair



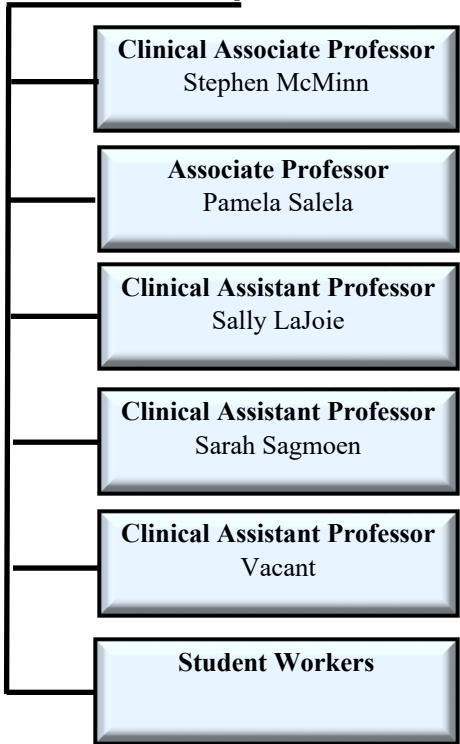
**University Librarian & Dean of Library Instructional Services**  
Pattie Piotrowski

**Director of Library Information Systems**  
Jeremy Hall



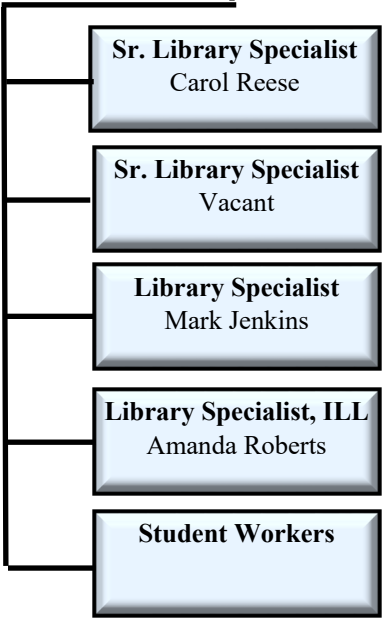
**University Librarian & Dean of Library Instructional Services**  
Pattie Piotrowski

**Library Instructional Services Program**  
John Laubersheimer, Chair



**University Librarian & Dean of Library Instructional Services**  
Pattie Piotrowski

**Director of Technical Services**  
Robin Mize



**University Librarian & Dean of Library Instructional Services**  
Pattie Piotrowski

**University Archivist**  
Thomas Wood

